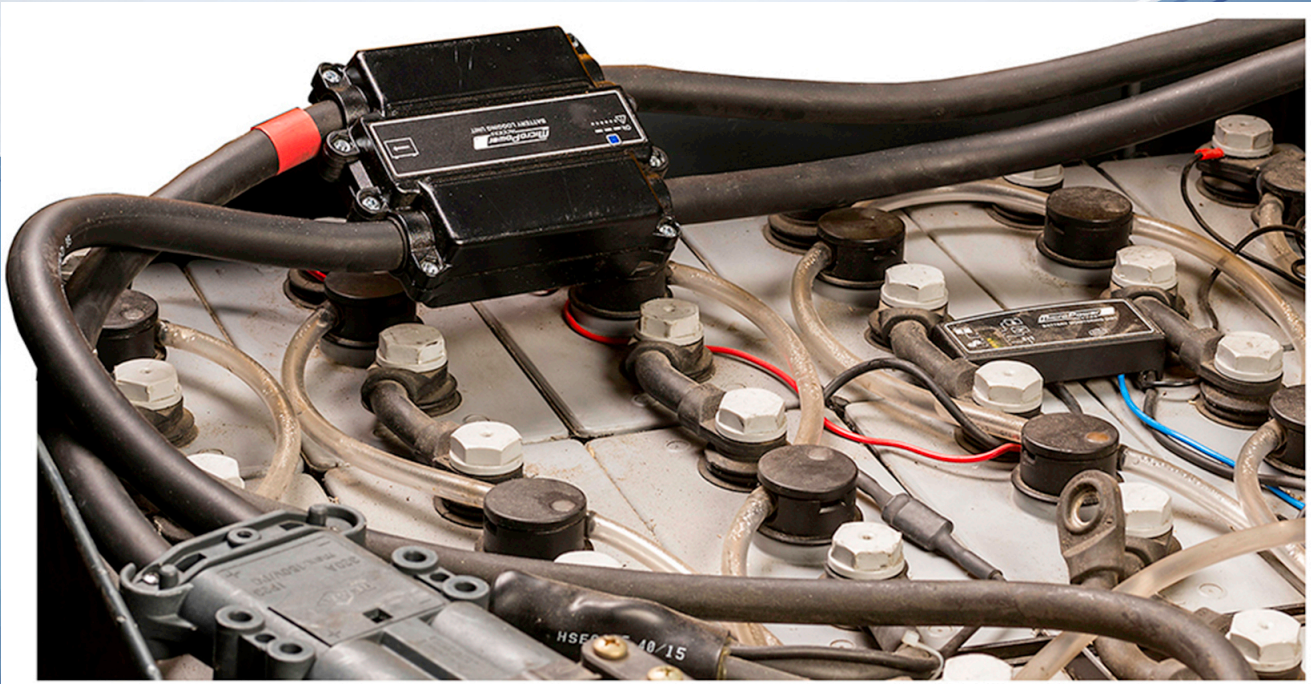


Access™ BLU

Battery Logging Unit



Access™ BLU (Battery Logging Unit)

Access™ BLU – Battery Logging Unit is a tool for collecting and measuring critical data from an electrical vehicle.

Access™ BLU can answer the following questions:

How many batteries are needed?

Does pause charging work with this application?

Why does the battery not last the whole shift?

Access™ BLU is installed quickly and easily on an electrical vehicle and the logging of the battery can start directly.

With Access™ USB Gateway & Service Tool the logged information is collected and presented in a basic and comprehensive table and diagram format.

- **Wireless communication**

Access™ BLU and Access™ USB Gateway has a FCC certified communication system for data transfer and communication.

- **Simple installation**

Access™ BLU has 95 mm² cables that are connectable to any optional battery connector.

- **Robust casing**

The casing of Access™ BLU is made of LEXAN™. The casing is of IP65 rating and withstands electrolyte, dirt and harsh handling.

- **Reliable**

Current measurements are within $\pm 0.5\%$ and voltage measurements are within $\pm 0.1\%$.



Access™ BLU is packaged in a lockable case that protects the unit from water, dust and impacts.



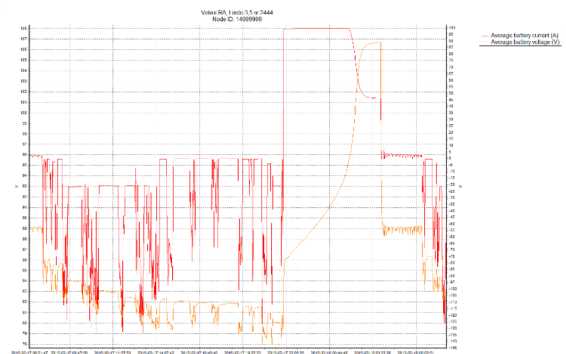
Access™ BLU functions

History log

The *History log* in Access™ BLU stores up to 500 days of data during every charging or discharging cycle.

Event log

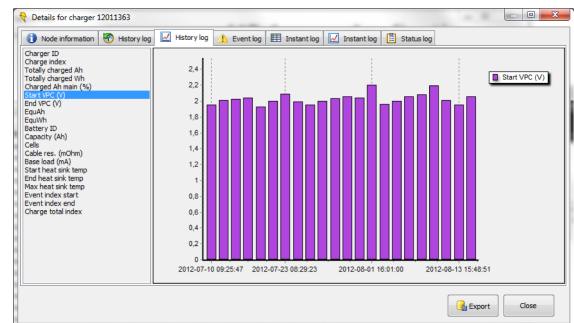
Access™ BLU stores more than 100 events including battery error and incorrect use, such as deep discharges. Access™ BLU enables good analyses of battery problem.



Instant log

With *Instant log* activated Access™ BLU stores more than 15 000 measurement points. This gives a highly detailed data storage that lasts from hours to weeks. The stored measurement points include minimum, maximum and average values of voltage and current.

The log intervals can be programmed from 1 sec to 18 hours.



Ah logging

Access™ BLU logs the total number of charged and discharged ampere-hours (Ah). The total charging and discharging time is accumulated and stored.

Momentary log

With Access™ Service Tool the momentary values can be shown on the display without storing the values in Access™ BLU.

THE MICROPOWER GROUP

Micropower is an independent producer of battery chargers and systems for industrial use. Micropower E.D. Marketing AB's head office is located in Växjö, Sweden.

Today the company, which was founded in 1984, is a leading player in the north European market for forklift battery chargers.

The Micropower Group enjoys the great advantage of retaining control over all important production process stages from transformer winding and control card manufacture to inspections and tests prior to delivery to customers. We have customers worldwide.

Chargers are produced in our factories in Sweden and Finland.

Micropower E.D. Marketing AB is certified according to ISO 9001 and ISO 14001 standards.

The following companies belong to the Micropower Group:

Parent company:
Micropower Invest AB

Subsidiaries:
Micropower E.D Marketing AB
Primepower AB
Powerfinn Oy
Micropower Fastighets AB
HF SM Power Innovations AB
Ecotec Limited
Micropower Shanghai Ltd

MICROPOWER[™]
PART OF MICROPOWER GROUP

Micropower ED Marketing AB
Idavägen 1
SE-352 46 Växjö
Sweden

Tel. +46(0) 470-72 74 00
Fax. +46(0) 470-72 74 01

sales@micropower.se
www.micropower-group.se