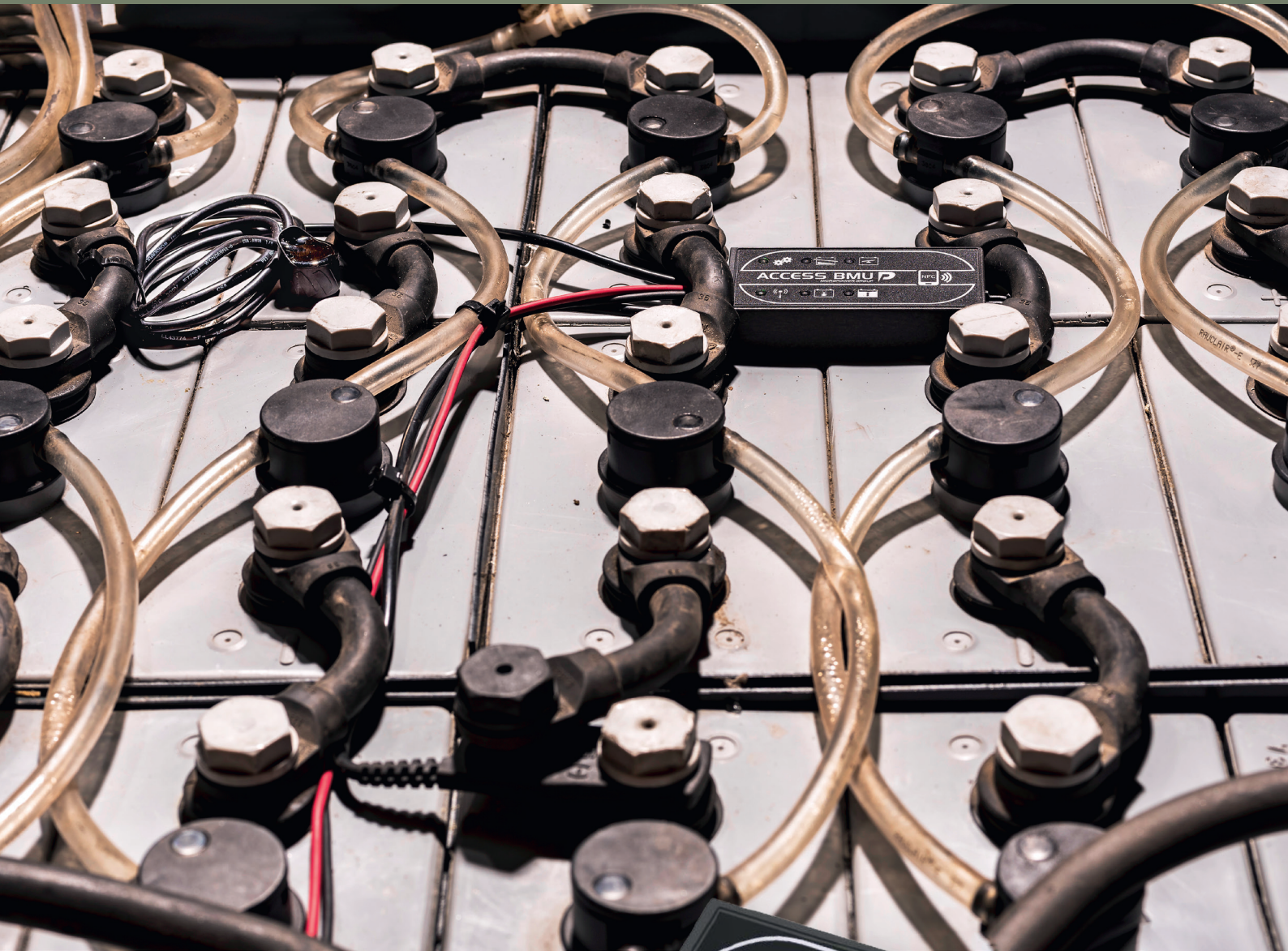


ACCESS BMU

MICROPOWER GROUP

BMU 2 – THE NEW GENERATION
OF BATTERY MONITORING UNITS



THE NEW GENERATION OF BMU

What does the BMU 2 do for your business?

The BMU 2 provides monitoring for your entire battery fleet. The small and compact design makes it easy to mount and install on the battery and lasts for the battery's entire lifetime. The BMU 2 measures current, voltage, voltage balance between cell groups, temperature and electrolyte level. The temperature monitoring is a mandatory input to the charger for fast and opportunity charging. By monitoring the battery, the best suited battery for the daily operations can easily be selected, optimizing the daily routine thus reducing time and costs.

When used with any Micropower Access charger the BMU 2 handles the configuration of the charger directly. The BMU 2 indicates the charging capacity as well as cycle life – providing businesses with information for efficient and long-term usage of batteries. The BMU 2 creates statistical information, that are accessible wirelessly from the BMU mobile application through Android phones or the Access Service Tool which can easily be connected to any PC. The collected data can be downloaded and transformed into graphs and used battery fleet planning.

Improved features

The BMU 2 comes with additional features such as state of charge indicator makes it possible to maximize the battery potential by using it until charging is actually necessary. The time and date settings have been upgraded with real backup – eliminating the risk of statistical logs errors. The BMU 2 sensors have been replaced with new nail connectors preventing acid intrusion. It also provides different current sensor solutions up to 300 A.

NFC technology

Using a BMU has never been easier. Through NFC technology the collected data from the BMU 2 can be accessible through any Android phone. By downloading the BMU mobile application, employees only need to select battery and access the data directly in their hand. The BMU mobile application increases accessibility and saves time – leaving more time for work.

BMU 2 models

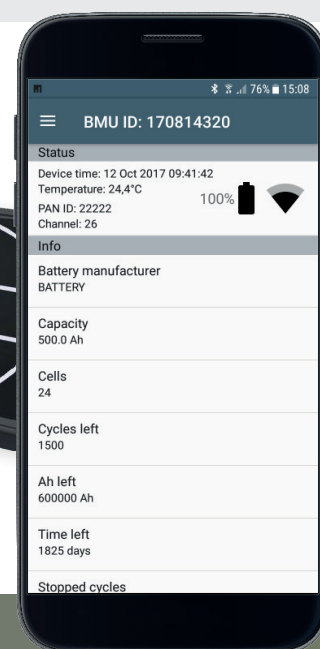
The BMU 2 comes in various models to match any lead/acid battery fleet, flooded or dry batteries, soldered or bolted connectors.

Supply voltage	20–125V
Center voltage sensors	±125 VDC
Electrolyte sensors	±125 VDC
Current sensor, continuous	300 A, DIN cell version 150 A, 35 mm ² external cable version 260 A, 95 mm ² external cable version
Accuracy	Current: 0.5 % or 100 mA within calibrated area. Voltage: 0.1% or 20 mV within calibrated area. Temperature: 1°C
Ingress protection	IP65

BMU 2 connected with an android phone through the usage of NFC technology.



The BMU is UL classified



Micropower ED Marketing AB
Idavägen 1
SE-352 46 Växjö, Sweden

Phone: +46 (0)470 727 400
sales@micropower.se
www.micropower-group.se

Powerfinn OY
Peramiehenkatu 6
FIN-24100 Salo, Finland

Phone: +358-(0)2-777 290
Fax: +358-(0)2-777 2918

info@powerfinn.fi
www.powerfinn.fi

Micropower GmbH
Sophie-Charlotten-Straße 92
140 59 Berlin, Germany

Phone: +46 (0)30 894 069 90

info@micropower-group.de
www.micropower-group.com

Micropower Shanghai Ltd
Rm101, Build3
No1501, Jinsui Road,
Pudong New District
Shanghai, China

Phone: (0)21 5093 8660,
(0)21 5093 8670
Fax: (0)21 5093 8680

wayne.qin@micropower.se
www.micropower-group.cn

Ecotec Ltd LLC
150 Marybill Drive
Troy, OH 45373, USA

Phone: 917.628.1836
Fax: 516.485.0344

tom.tag@ecotecbatcharger.com
www.ecotecbatcharger.com